


# **Pi-Kit : assembly instructions**



**Raspberry PI5  
+ USB Controls.**



Scan the QR code to watch the video assembly

- ✓ Your Raspberry must be configured, ready to play (see instructions for screen configuration)
- ✓ Prepare the power supply wiring diagram, the buttons panel wiring diagram, the LED button wiring diagram (option)
- ✓ The LCD screen can be mounted for a horizontal or vertical image gaming interface. The plan describes by default the assembly for the horizontal image, in case of assembly for a vertical image  
the pictogram  indicates the variation on the plan.
- ✓ If you use a cordless screwdriver, pay attention to the torque used.

## Necessary tools:




4x16mm



3.5x10mm



PZ2 



2.6x12mm



PH1 



Flat pliers or socket wrench  
size 10 and 14 to tighten the  
different nuts.



Cutter to cut  
the rubber profile

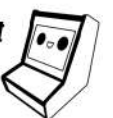
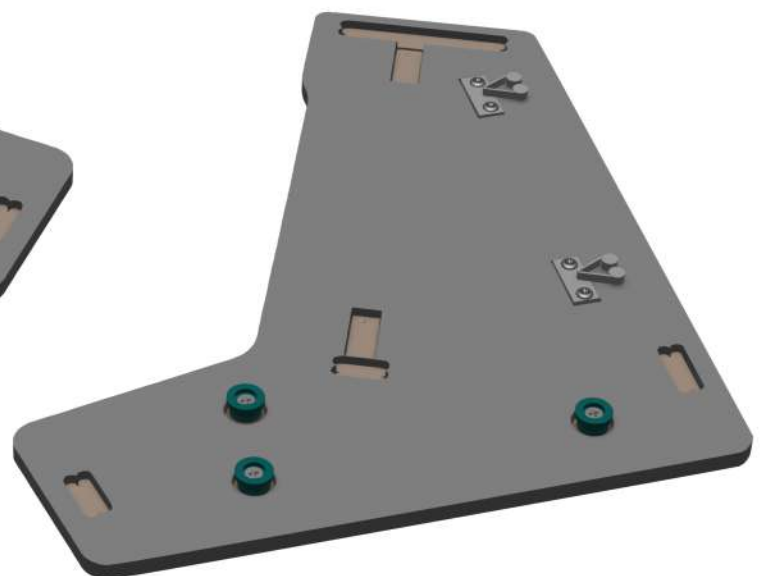
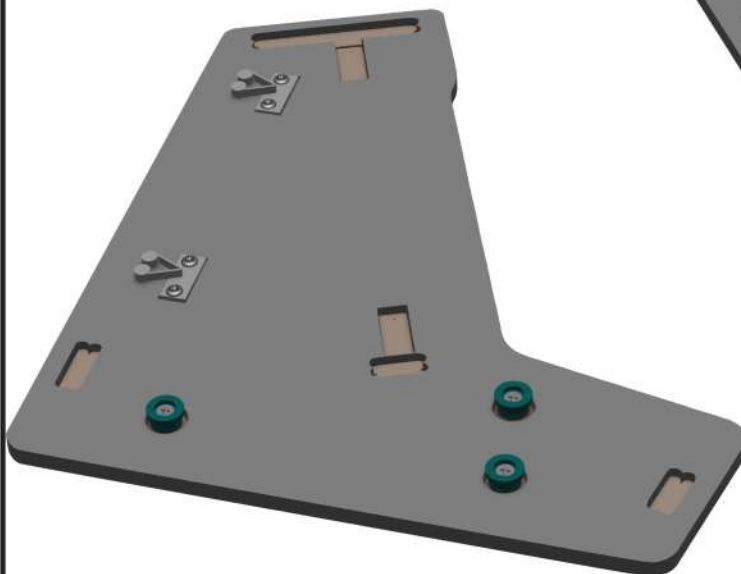
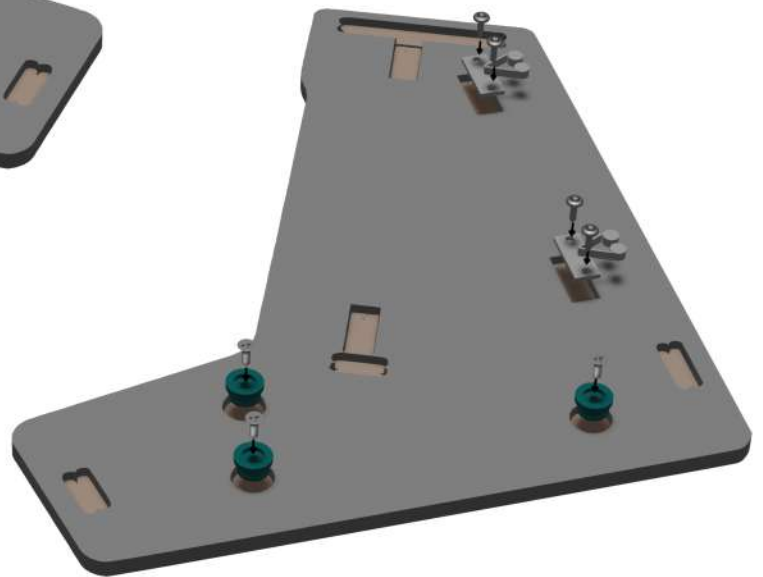
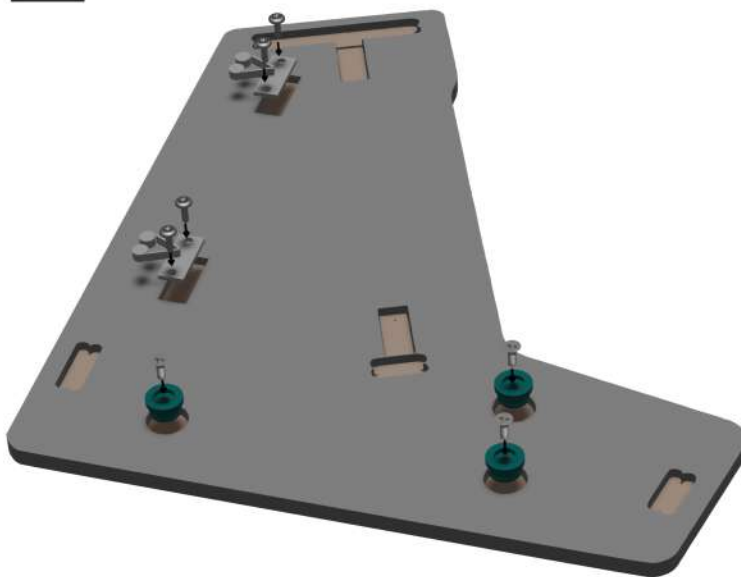
January 2025

**Pi-Kit**



[www.pixinvader.com](http://www.pixinvader.com)

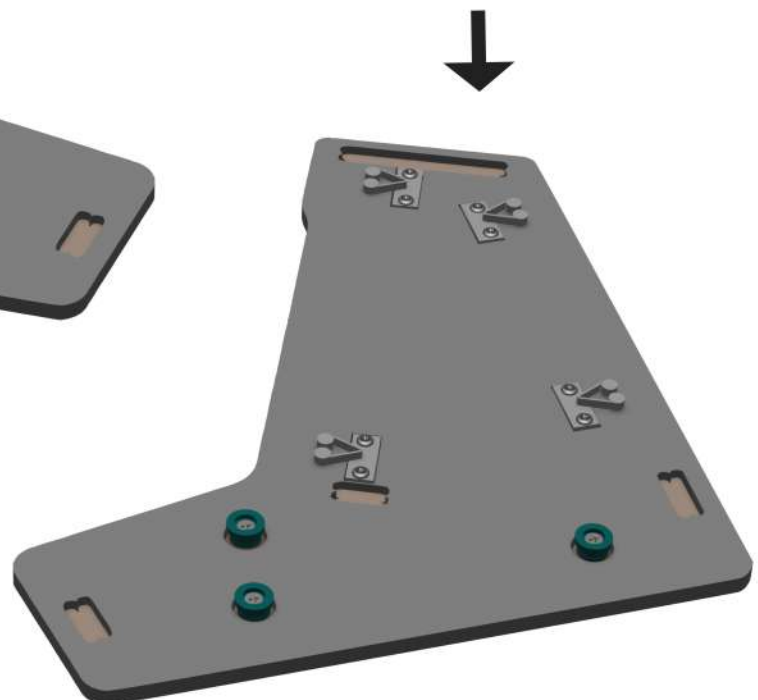
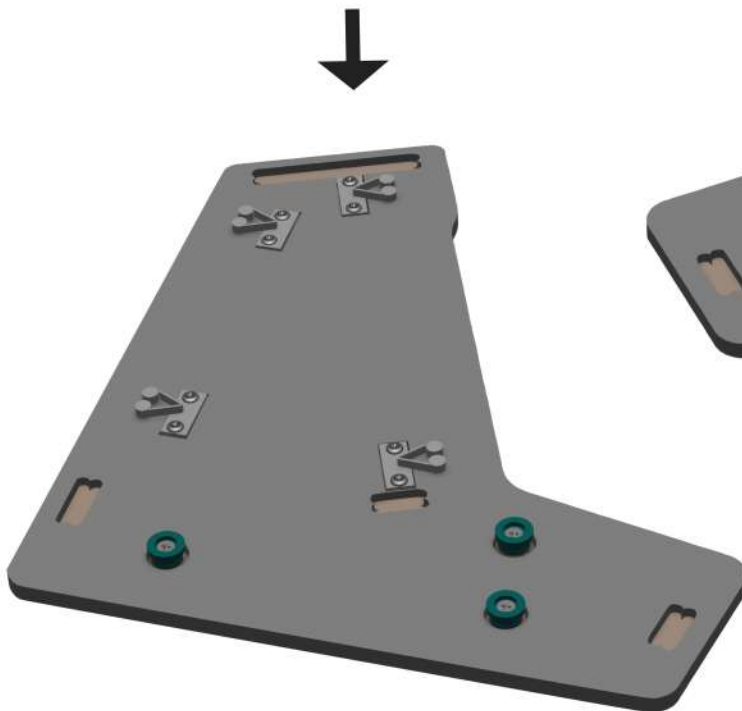
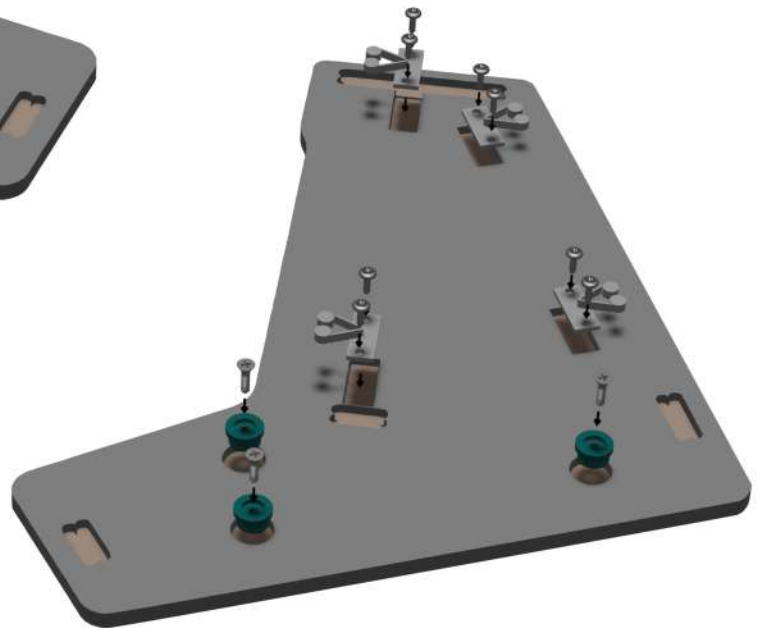
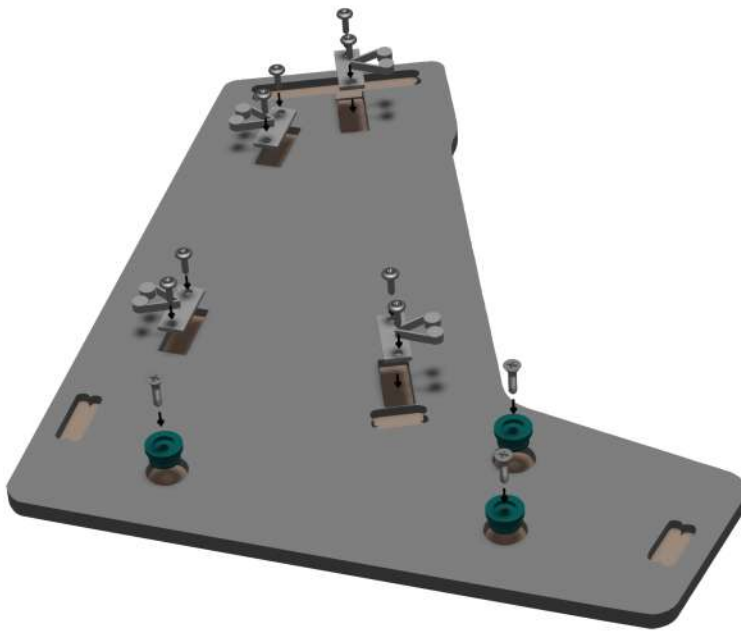
# 1 Horizontal screen version



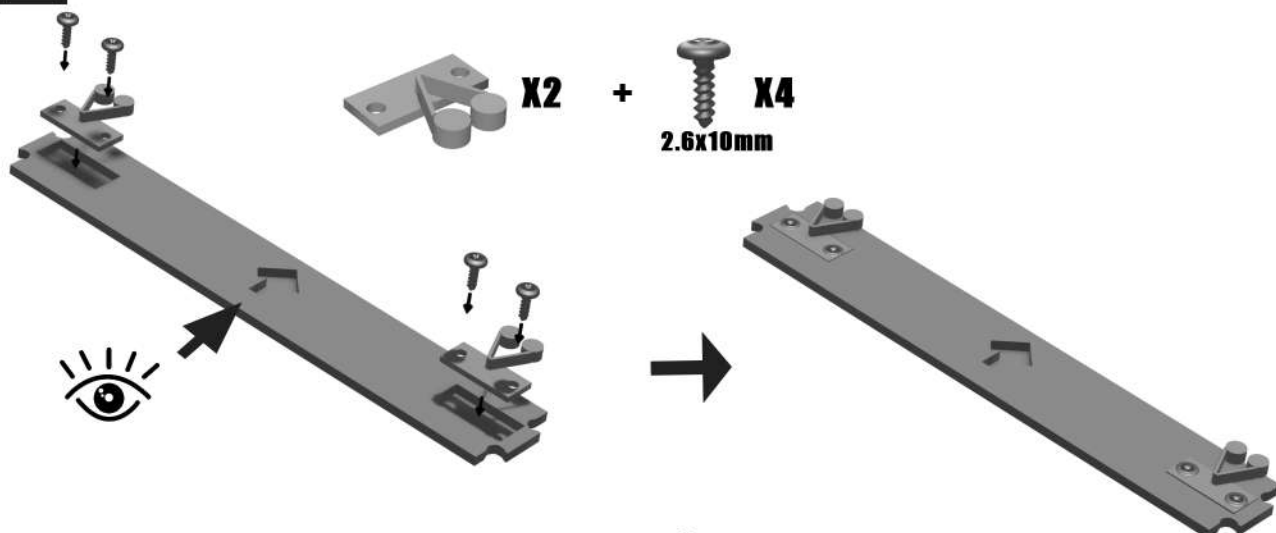
# 1 Vertical screen version



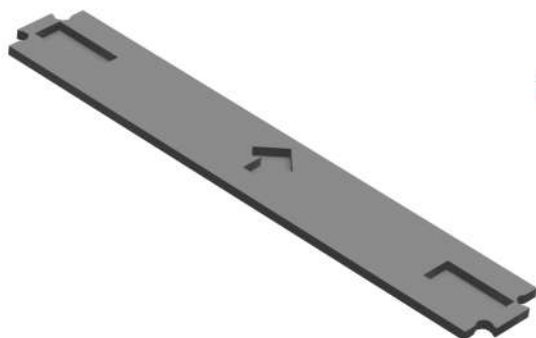
Go to the next step if you chose the configuration with the screen horizontal



## 2 Horizontal screen version



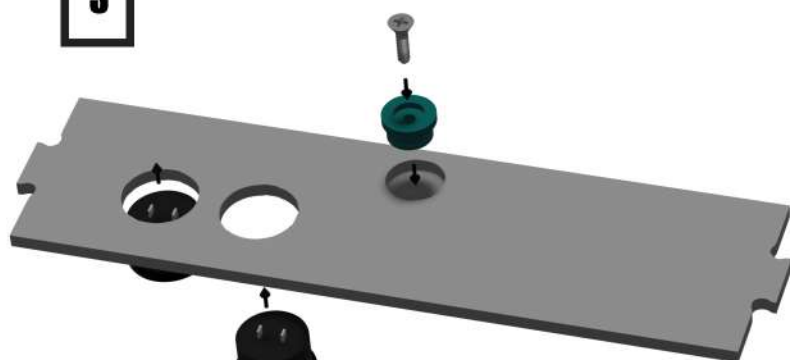
## Vertical screen version



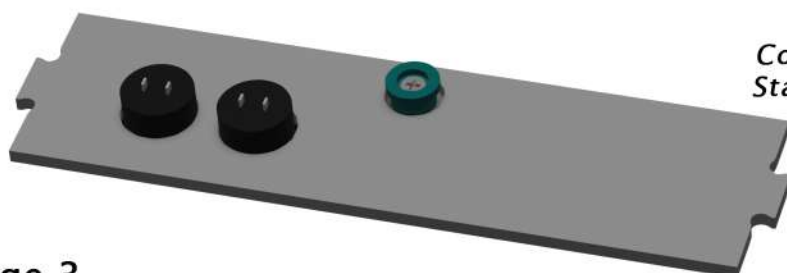
Go to the next step if you chose the configuration with the screen horizontal

*Keep this planck empty*

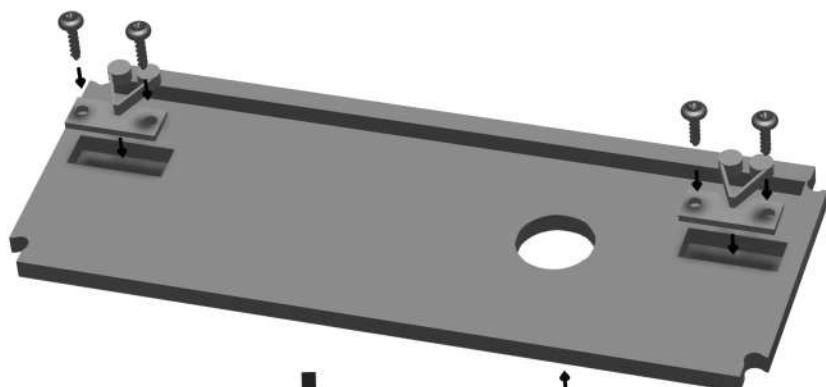
## 3



Connect the wires to the Select and Start buttons, see the panel diagram



#### 4 Horizontal screen version



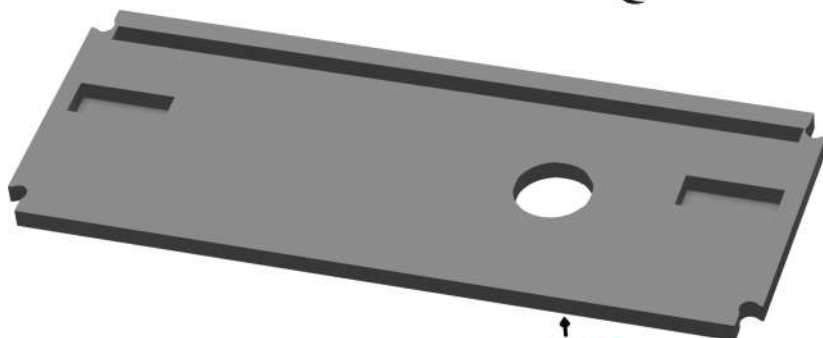
*Connect the wires to the switch-off button, see the panel diagram*

*This button is not active in RPI5 version + USB , replaced with a cap.*

#### Vertical screen version



*Go to the next step if you chose the configuration with the screen horizontal*

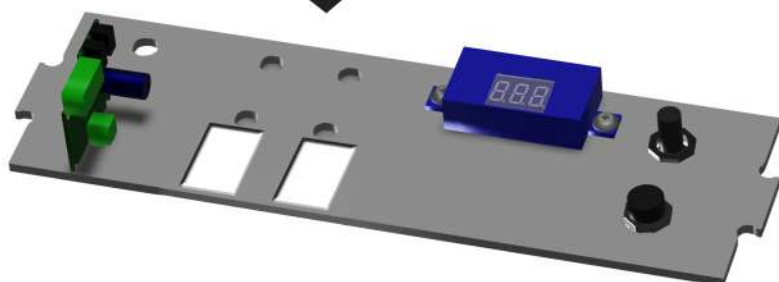
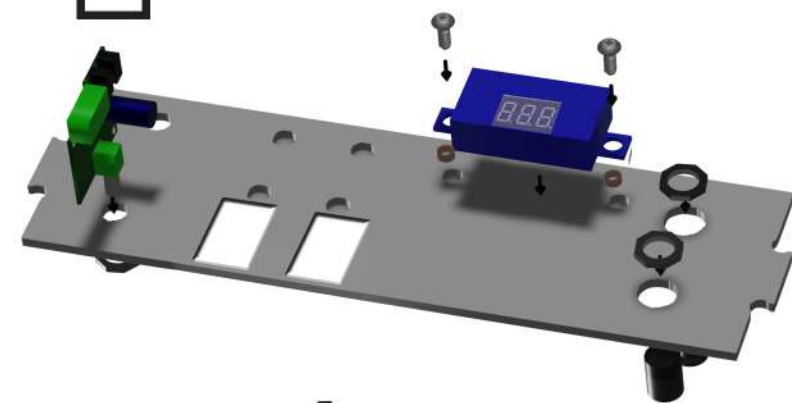


*Connect the wires to the switch-off button, see the panel diagram*

*This button is not active in RPI5 version + USB , replaced with a cap.*



5



X1



X1



X2

2.6x12mm



X1



X1

Connect the terminal of the power plug and the main witch together , see the electrical diagram



LED buttons option



X1

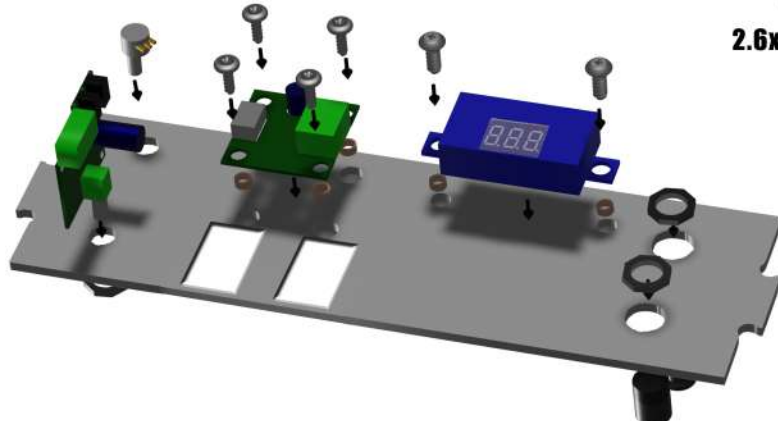


X4

2.6x12mm



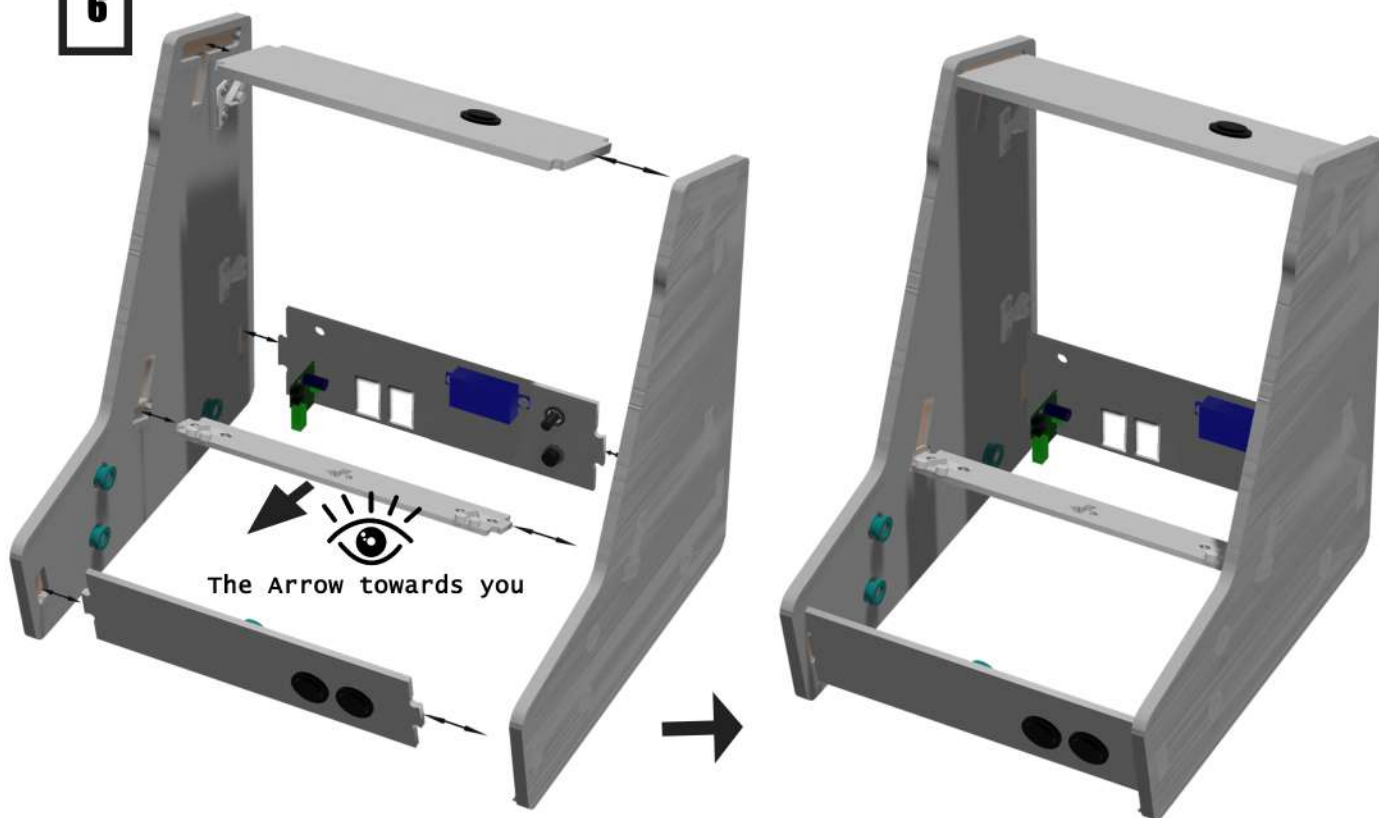
X4



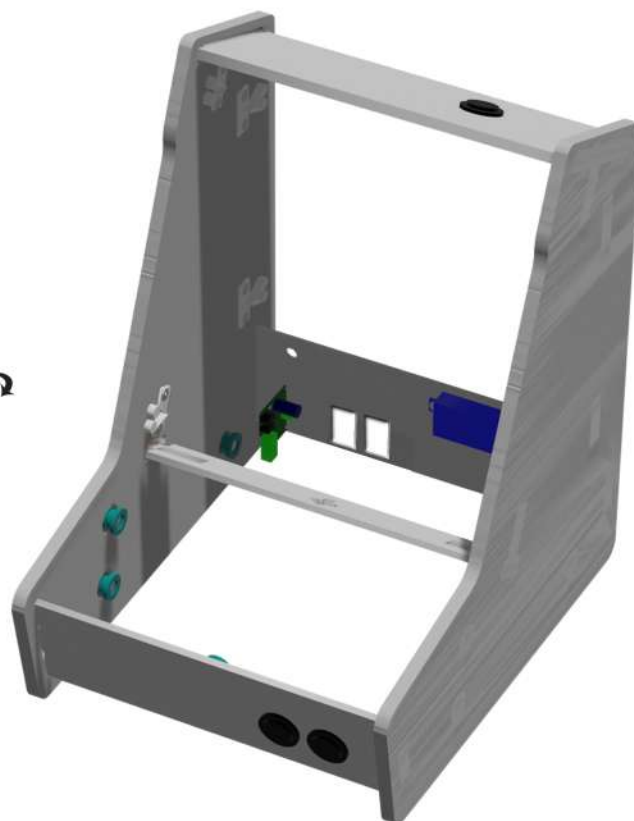
Pi-Kit



6

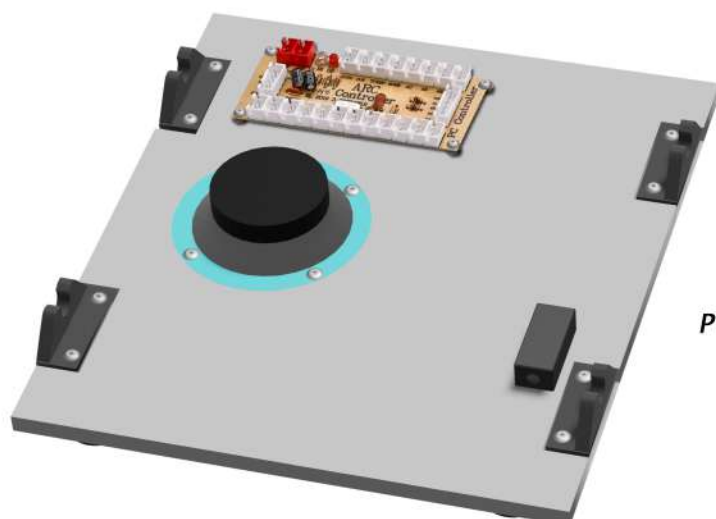
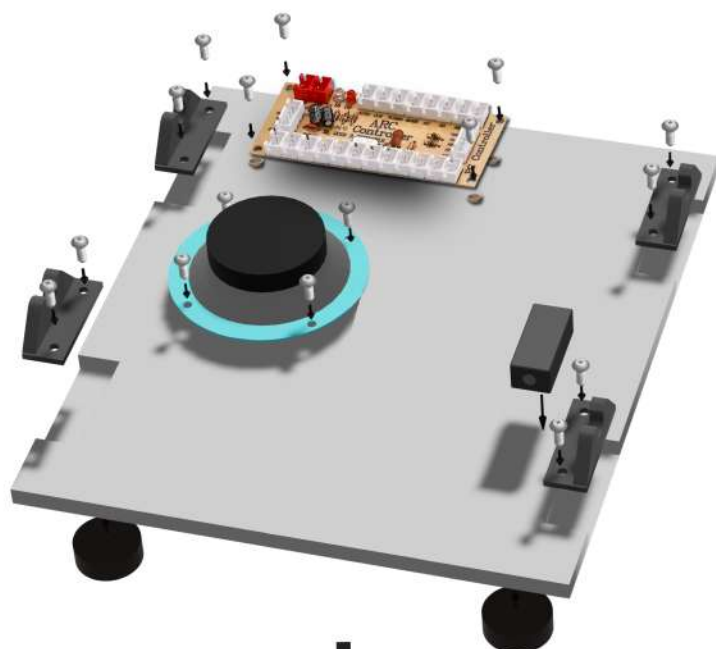




Vertical screen version



7


 X4



 X4 +  X8  
3.5x10mm

 X1

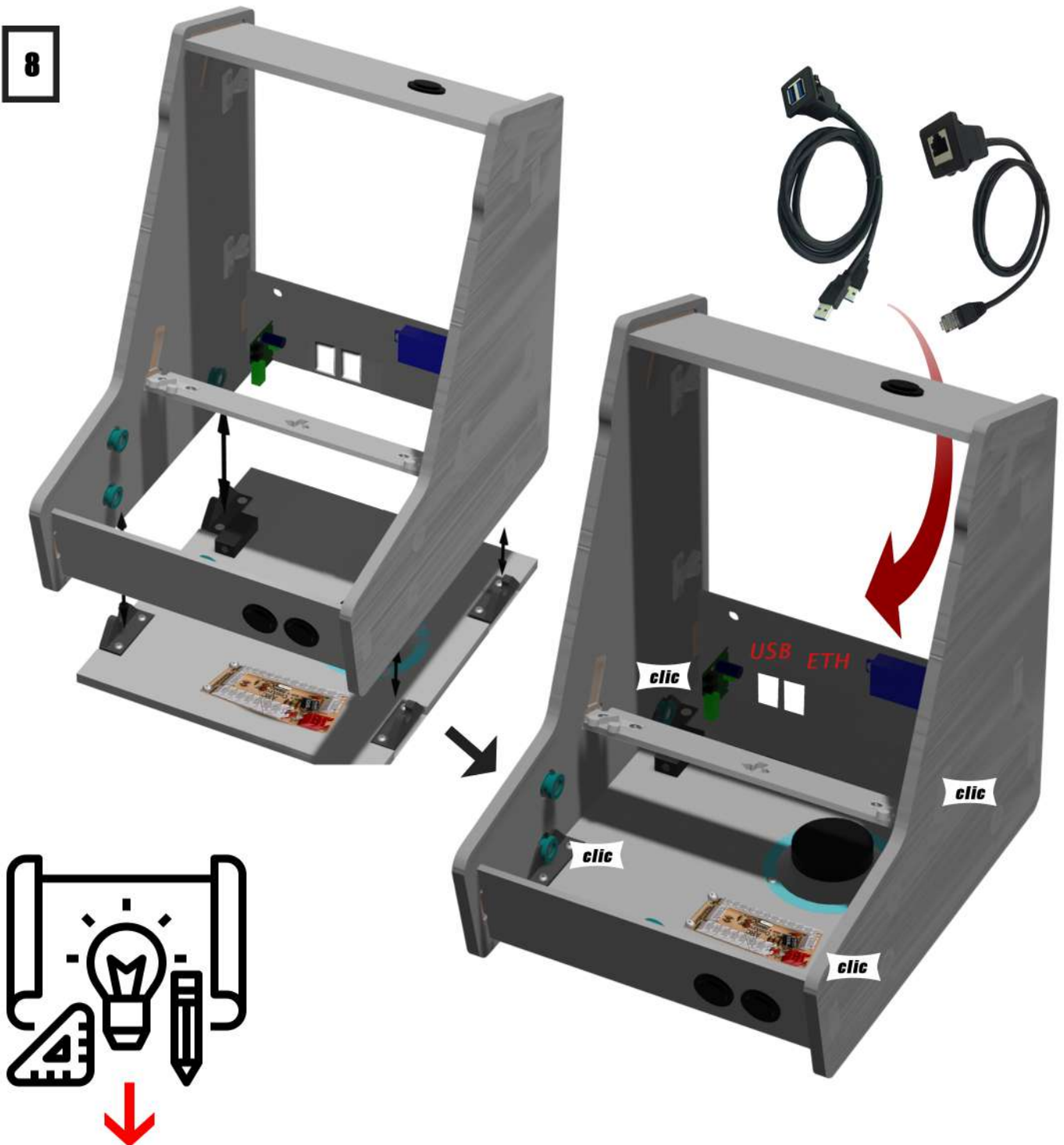
 +  X4  
3.5x10mm

 +  X4  
2.6x12mm

Plug in the USB cable connector



8

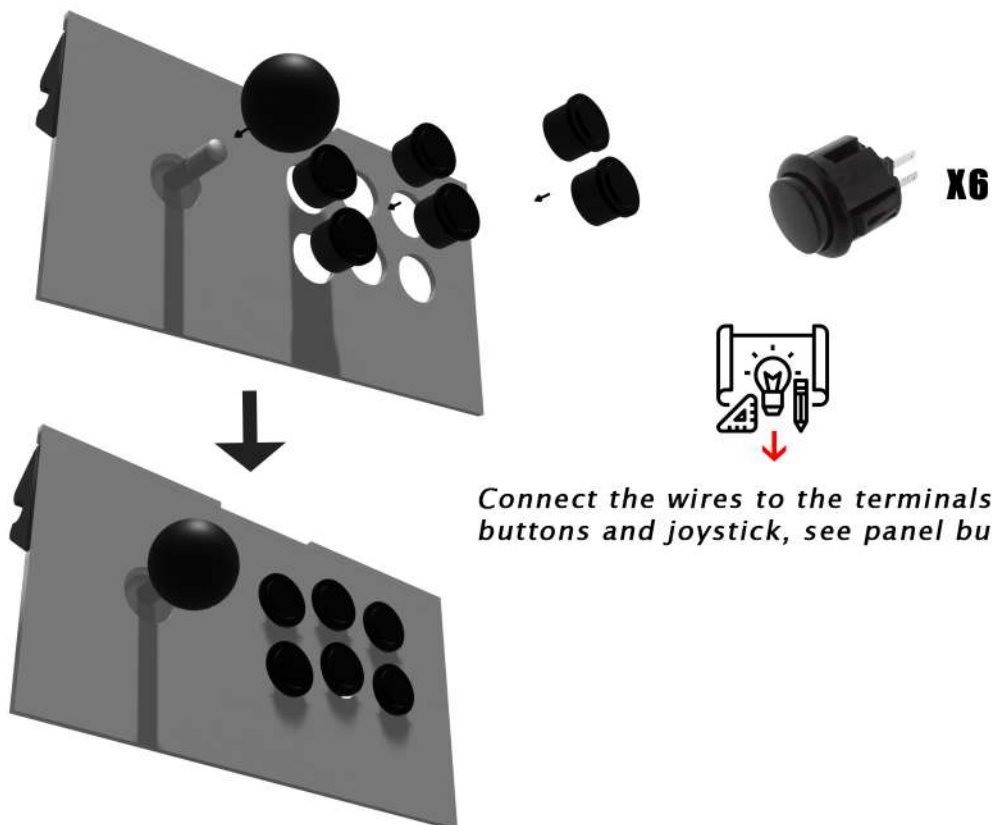
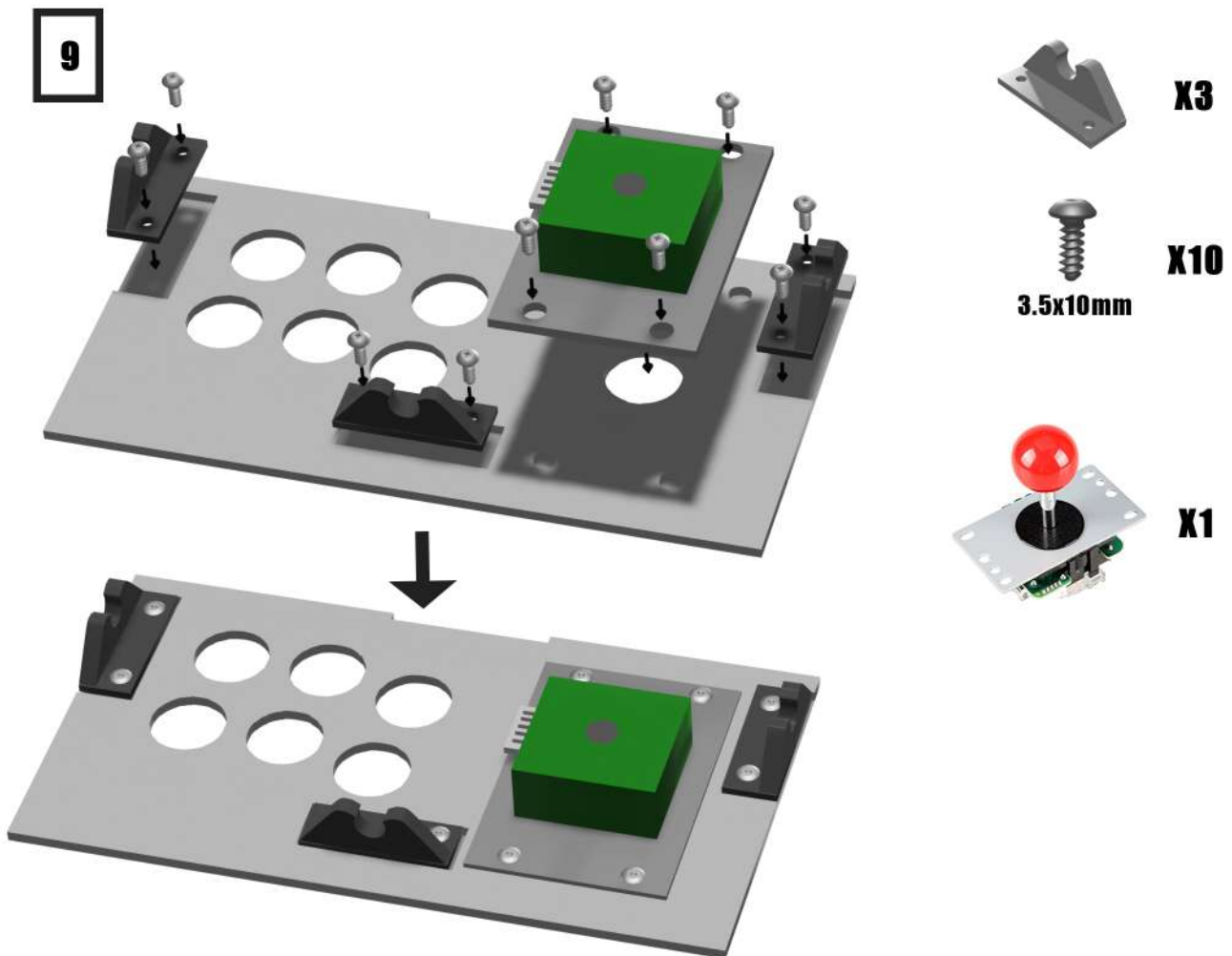


*Cable (see wiring plan):*

- Pass the USB and Ethernet extensions, clip the bases
- Connect the amp terminals to the speaker
- Connect an audio jack plug to the amplifier
- On the WAGO terminal blocks, connect the +12V (red wires) on one terminal block, then connect the ground (black wires) to the other Wago terminal block
  - >Audio amplifier
  - >12V to USB converter
  - >Main switch (red wire)
  - >Female power plug (black wire)
  - >The voltage regulator for the illuminated buttons (option)

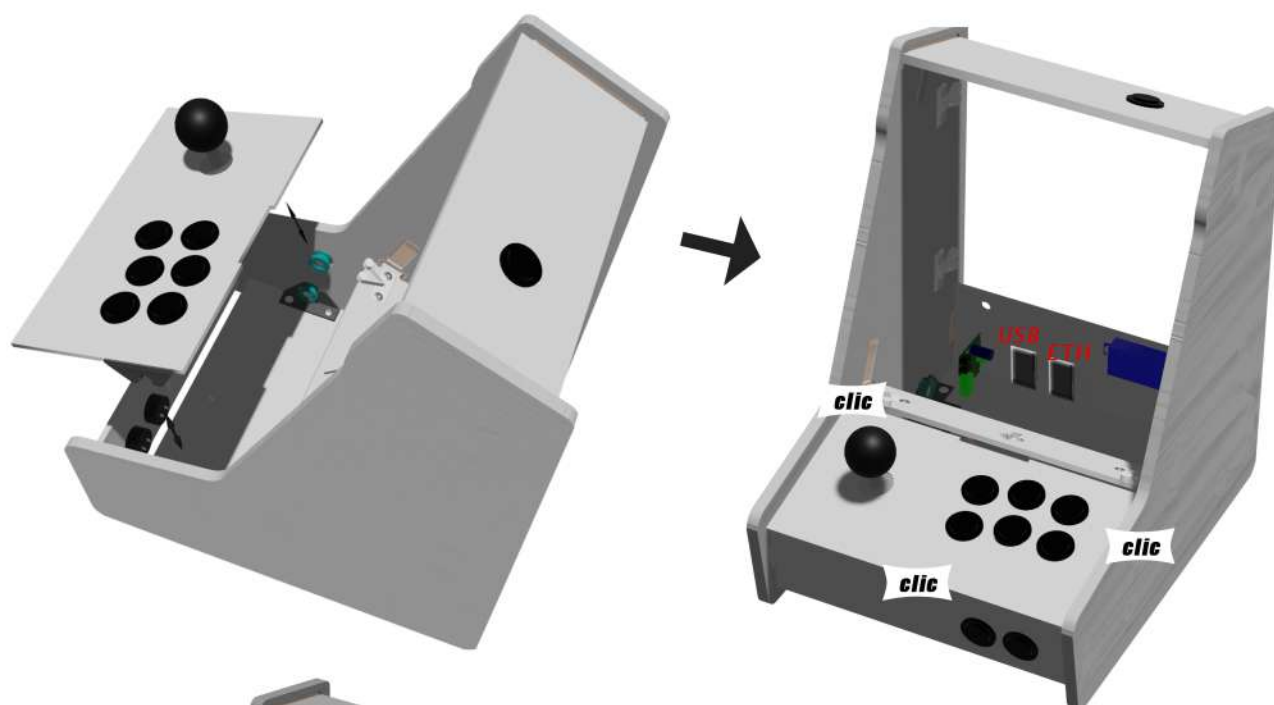
*Please note, only 1 wire per location on the Wago terminal block.*

9



**10**

Connect the panel wires to the USB control card  
(See the game panel wiring diagram)  
Wire the LED power wires to the 12V dimmer (option)  
Clip the gaming panel



**11**

Clip the screen

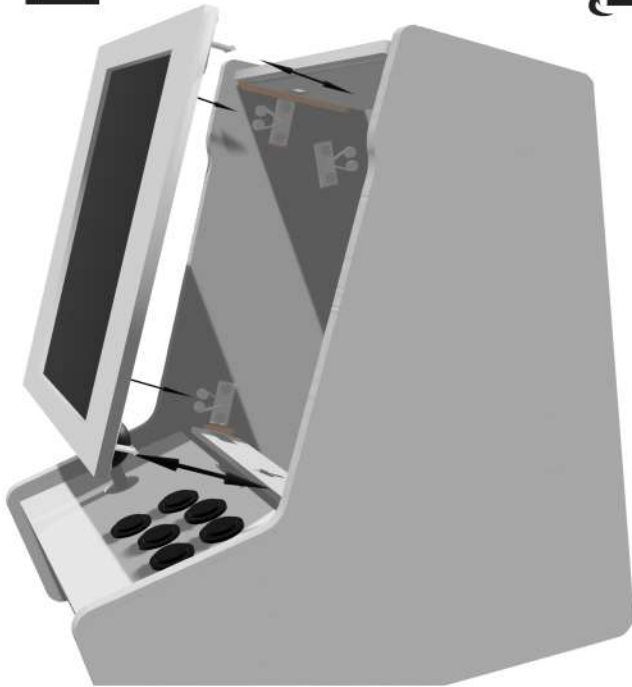


Connect the USB-C power plug of the screen  
Connect the mini HDMI plug to the screen and take it out for the RPI5  
Connect the audio jack plug to the audio output on the screen video driver card

## 11 Vertical screen version



Go to the next step if you chose the configuration with the screen horizontal



Connect the USB-C power plug of the screen  
Connect the mini HDMI plug to the screen and prepare it for the RPI5

## 12

Installation of the plexiglass in front of the screen





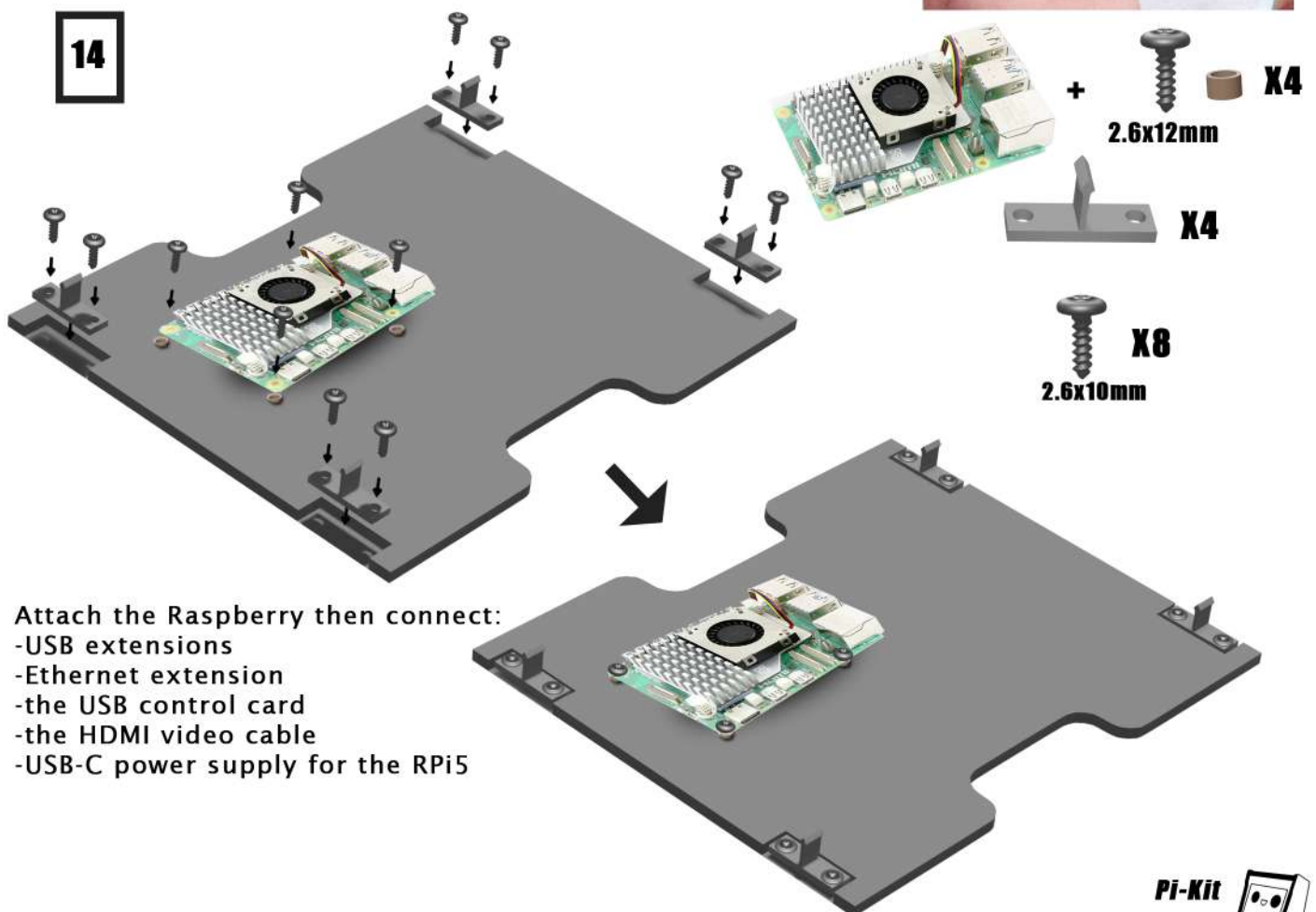
**13**



Lay the 2 pieces of 23 cm of adhesive profile.  
Then go around with the adhesive profile. A drop of glue  
(optional) can be added to reinforce at corners.  
Cut at the corners to flatten the rubber ply.



**14**





15

