


Pi-Kit : assembly instructions



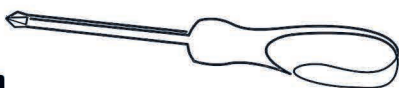
Scan the QR code to see the assembly in video

- ✓ Your Raspberry should be set up, ready to play (see instructions for display setup, activation of the GPIO and activation of the "power switch")
- ✓ Prepare the power supply wiring diagram, the wiring diagram of the buttons panel → GPIO of the Raspberry, the wiring diagram of the LED buttons (optional)
- ✓ The LCD screen can be mounted for a horizontal or vertical image gaming interface. The plan describes by default the assembly for the horizontal image, in case of assembly for a vertical image
the pictogram  indicates the variation on the plan.
- ✓ If you use a cordless screwdriver, pay attention to the torque used.

Necessary tools:



4x16mm 3.5x10mm



PZ2 



Flat pliers or socket wrench size 10 and 14 to tighten the different nuts.



2.6x10mm 2.6x12mm



PH1 



Cutter to cut the rubber profile



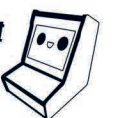
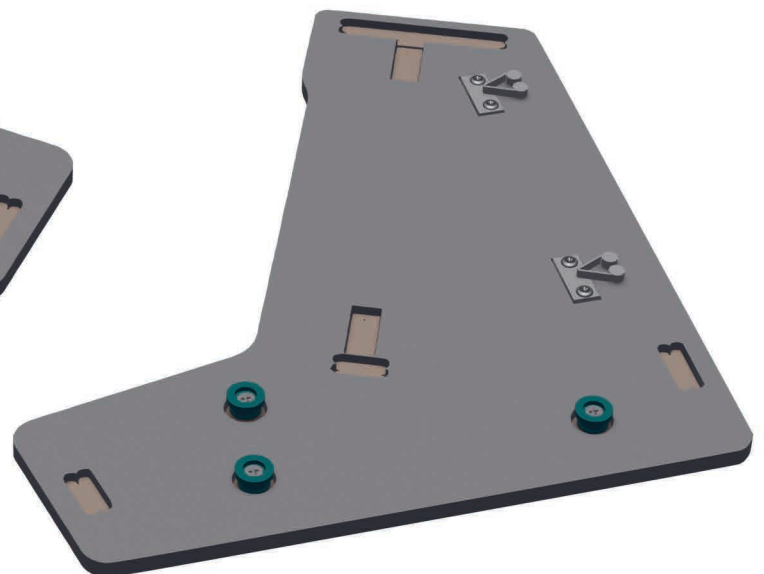
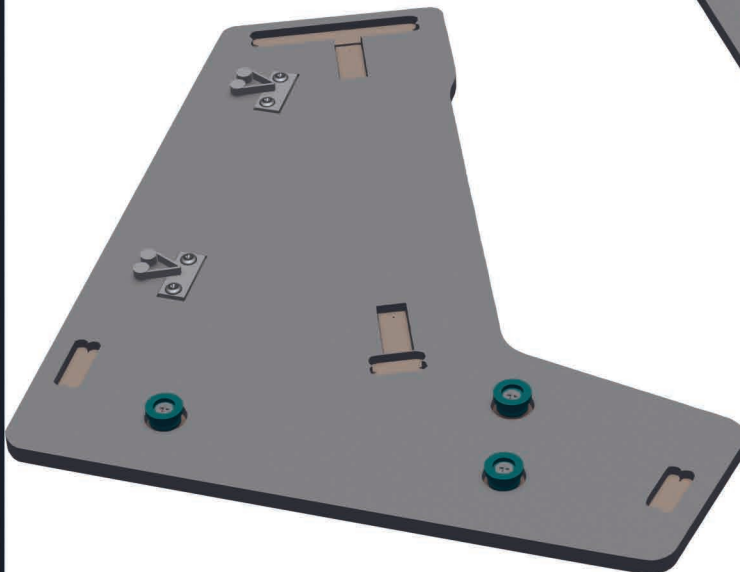
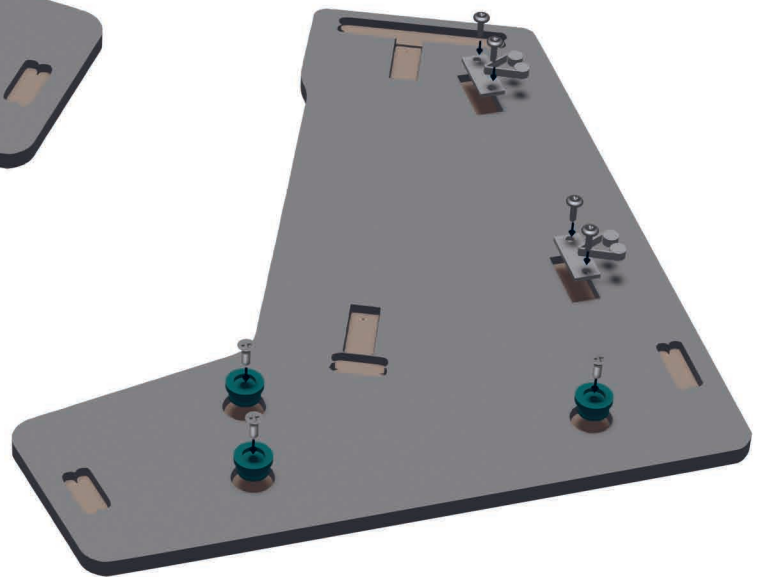
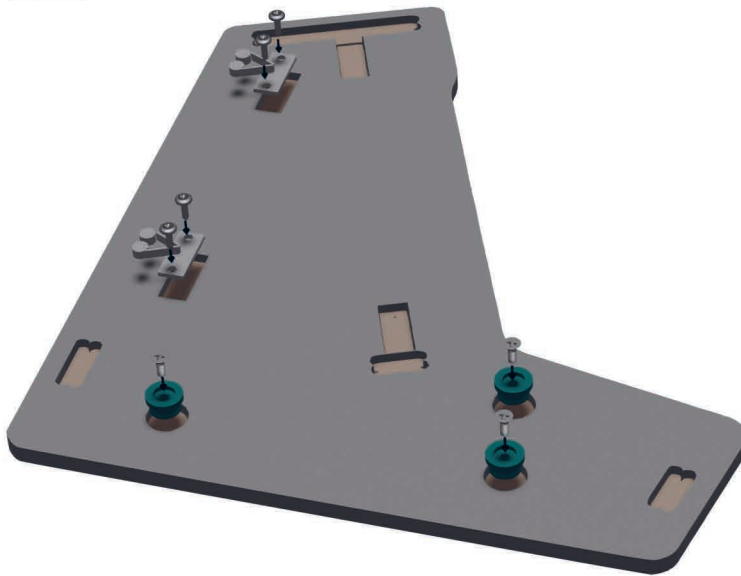
Glue (optional)

April 2022



www.pixinvader.com

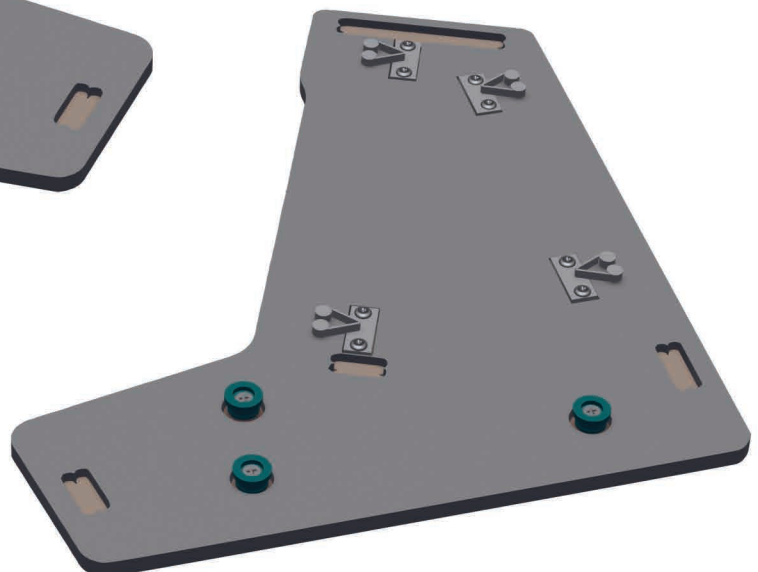
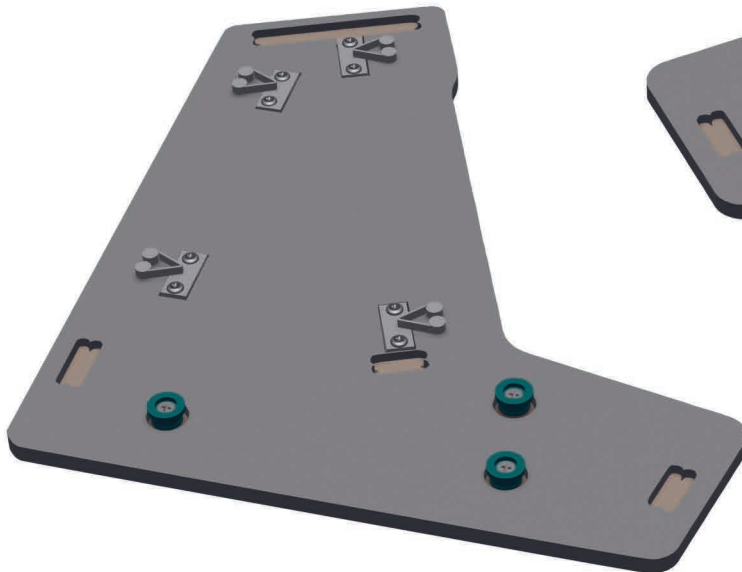
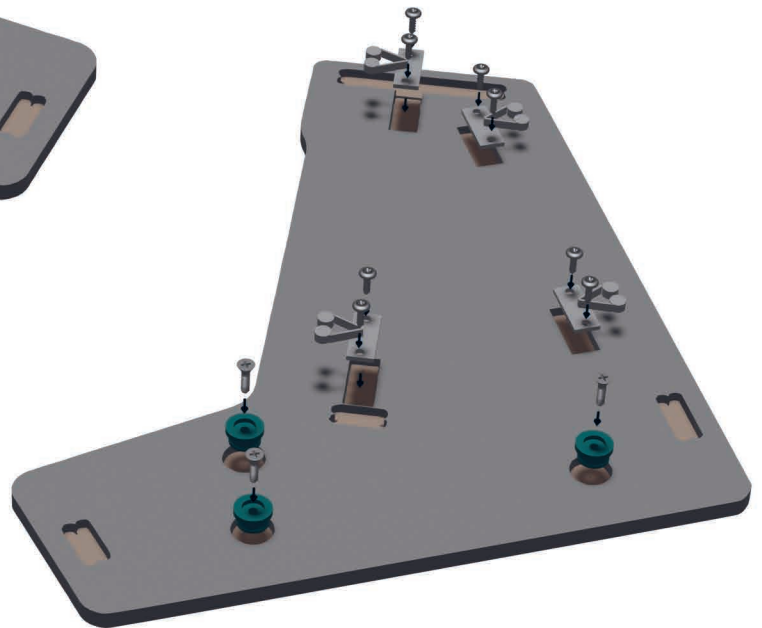
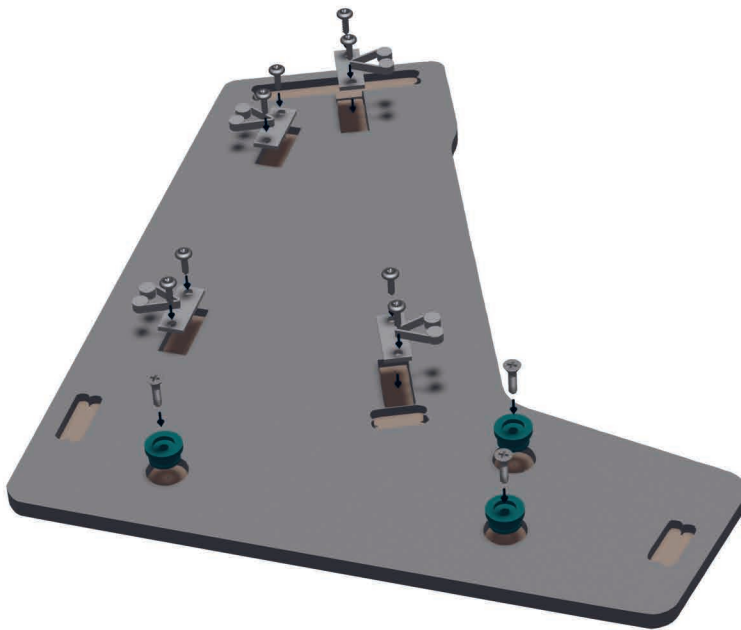
1 Horizontal screen version



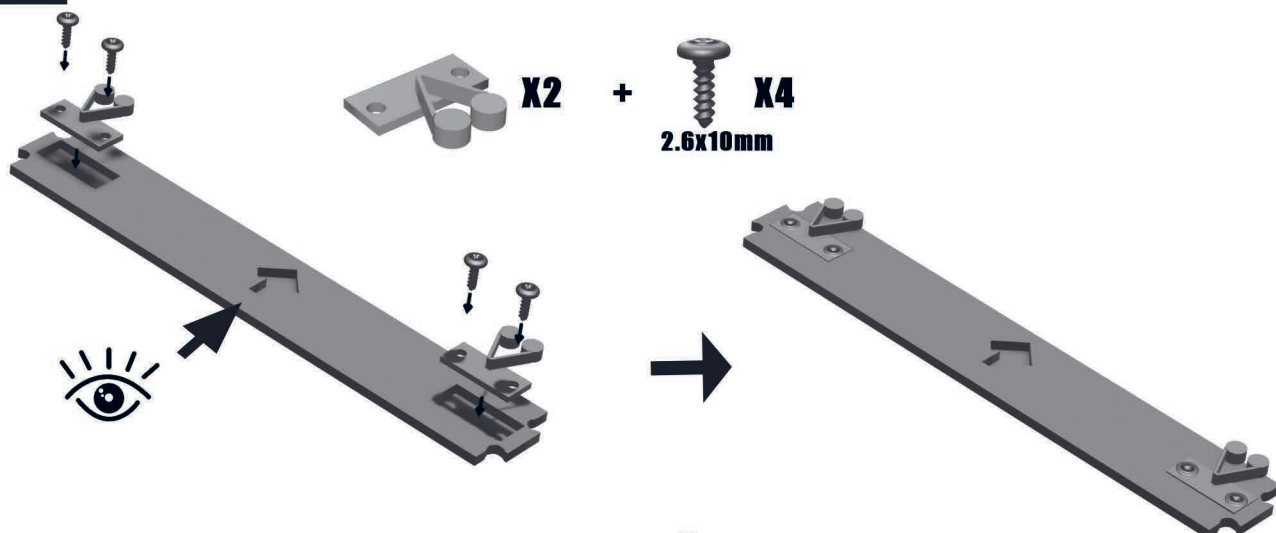
1 Vertical screen version



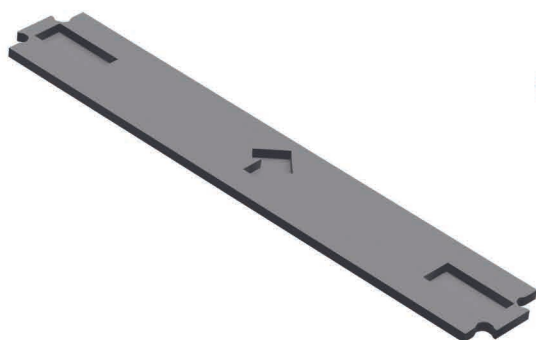
Go to the next step if you chose the configuration with the screen horizontal



2 Horizontal screen version



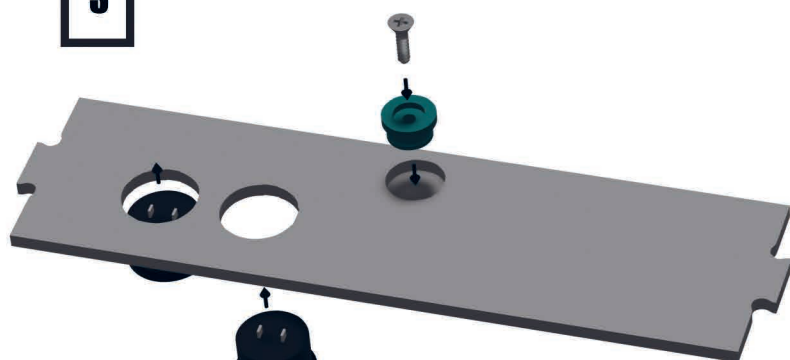
Vertical screen version



Go to the next step if you chose
the configuration with the screen horizontal

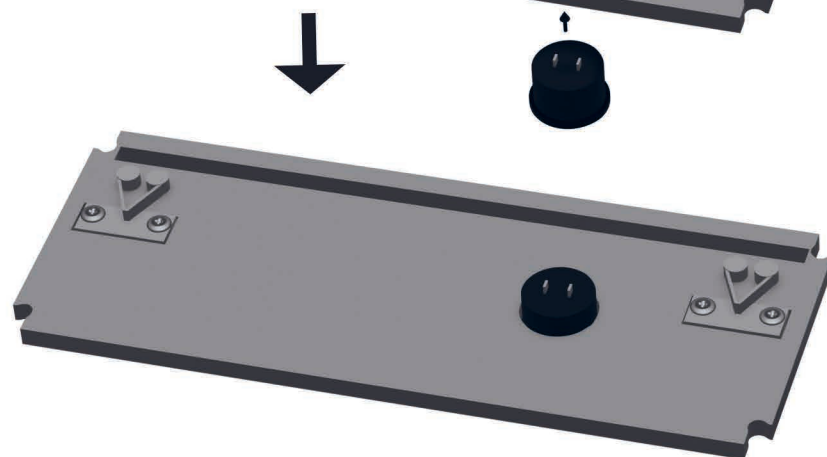
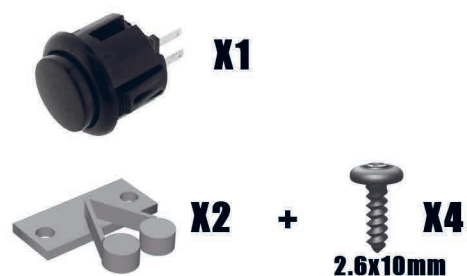
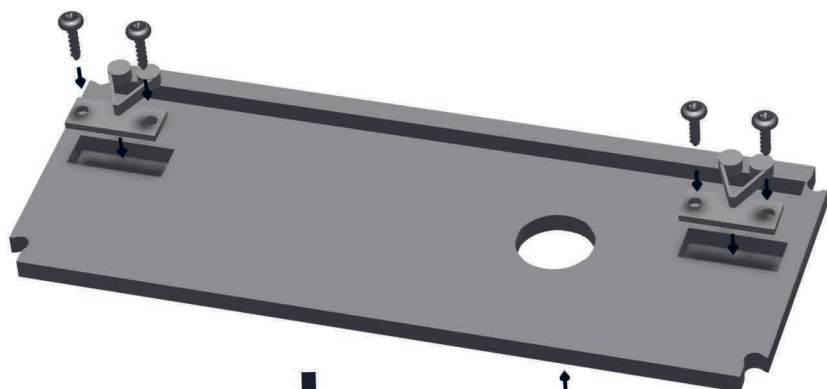
Keep this plank empty

3



Connect the wires to the Select and
Start buttons, see the panel diagram

4 Horizontal screen version

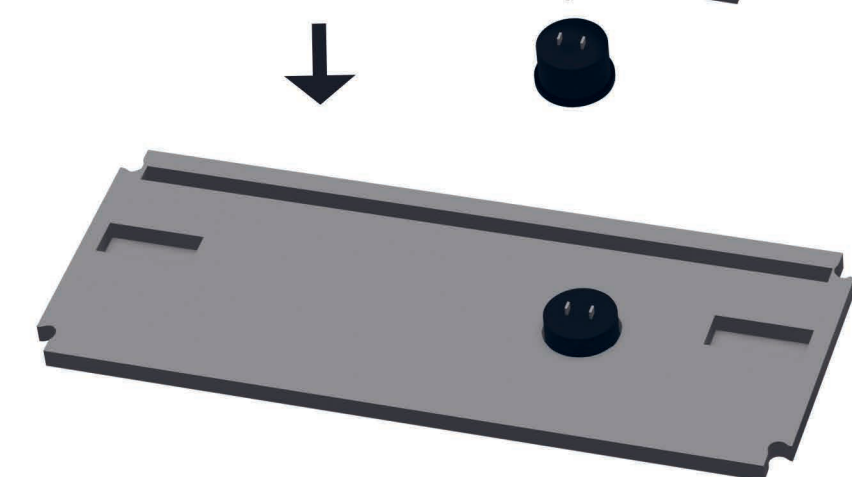
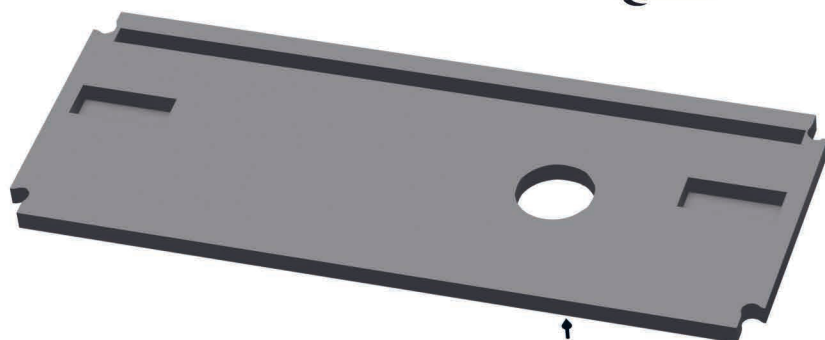


Connect the wires to the switch off button, see the panel diagram

Vertical screen version

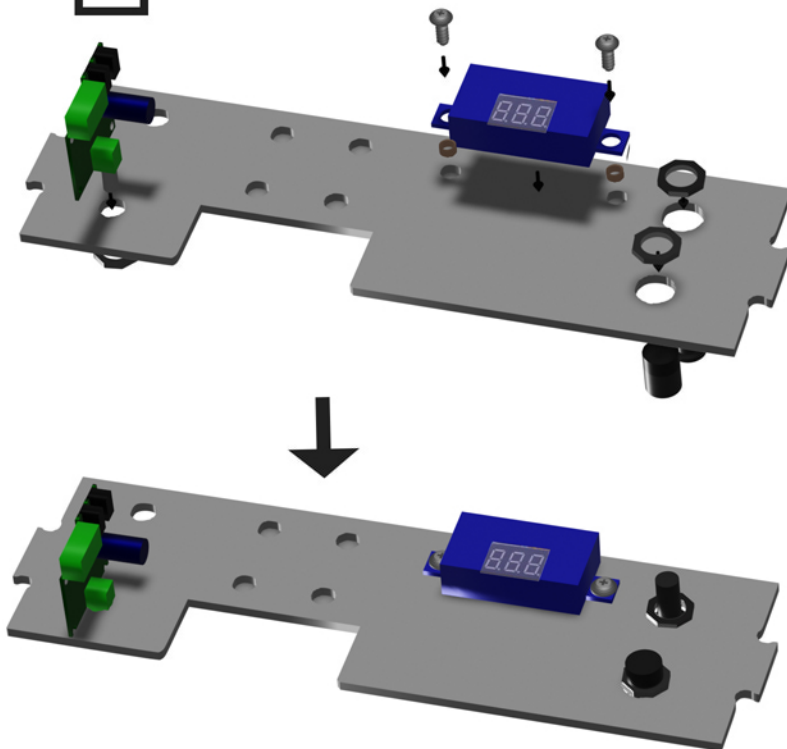


Go to the next step if you chose the configuration with the screen horizontal



Connect the wires to the switch off button, see the panel diagram

5



X1



X1



X2

2.6x12mm



X1

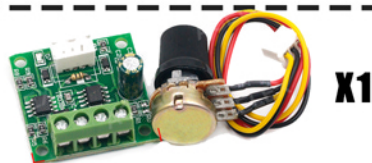


X1

Connect the terminal of the power plug and the main witch together , see the electrical diagram



LED buttons option



X1

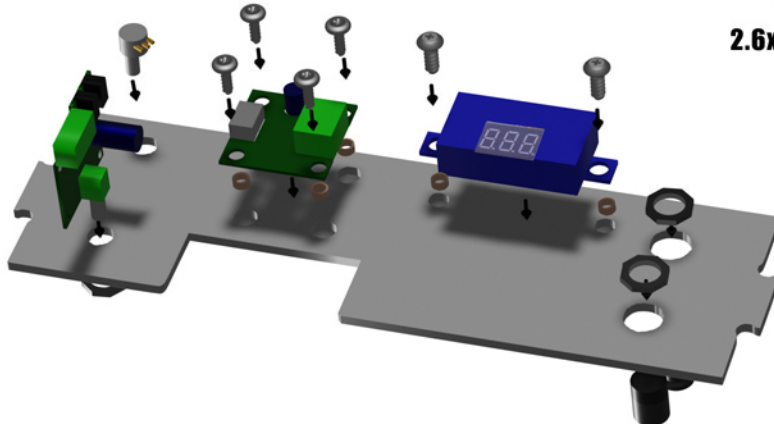


X4

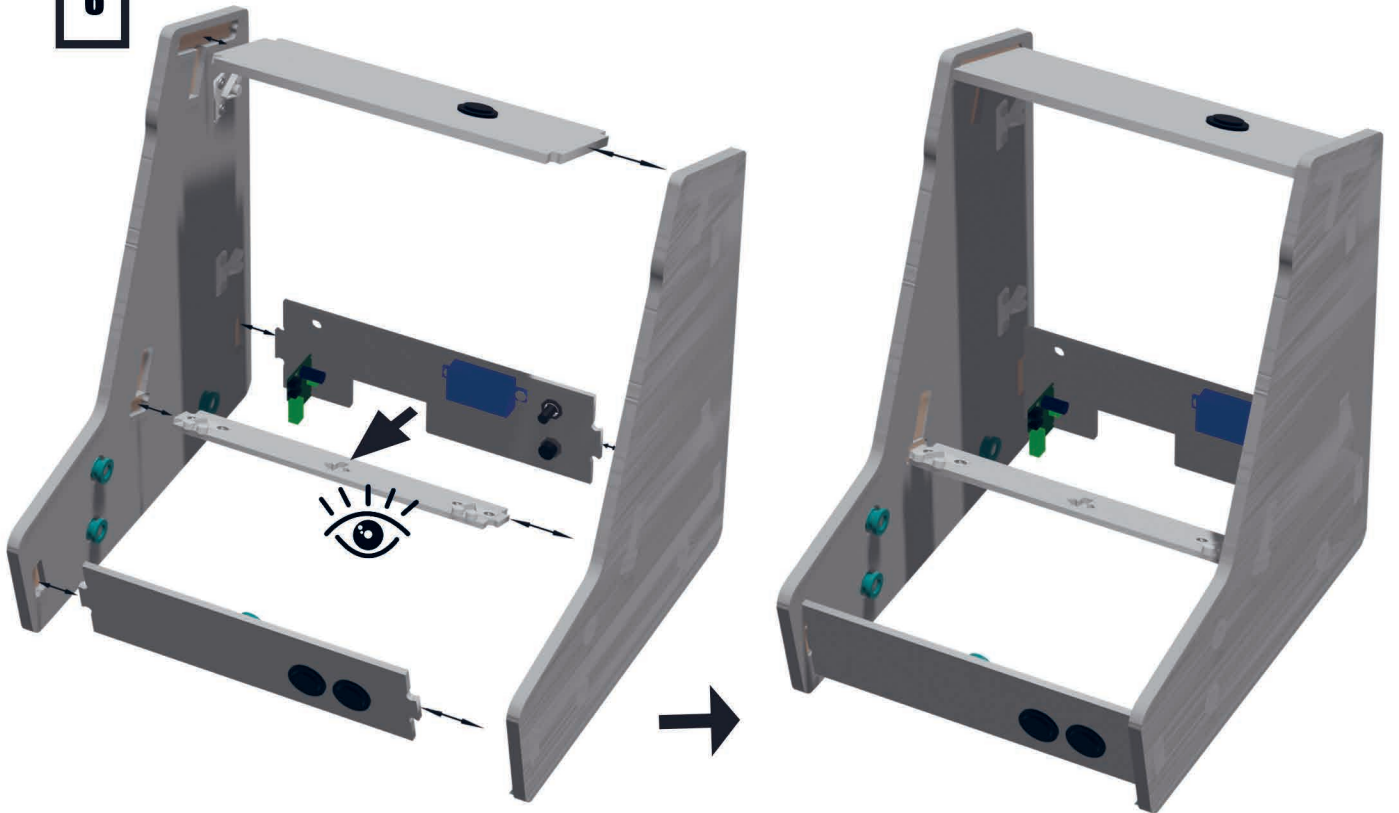
2.6x12mm



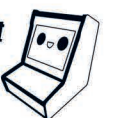
X4



6

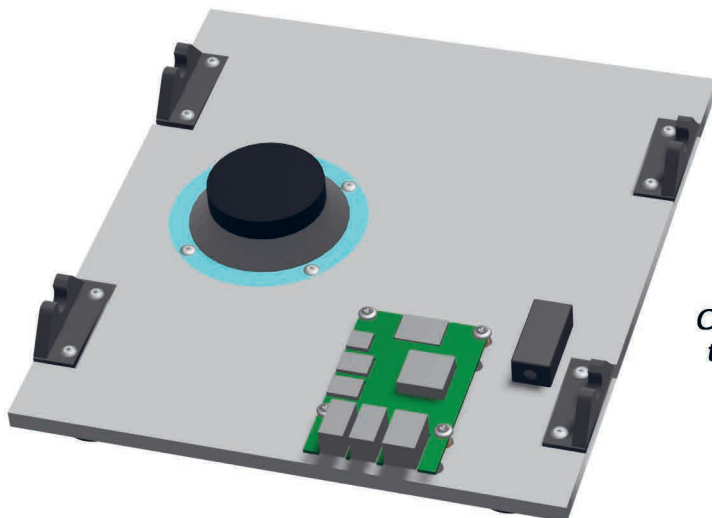
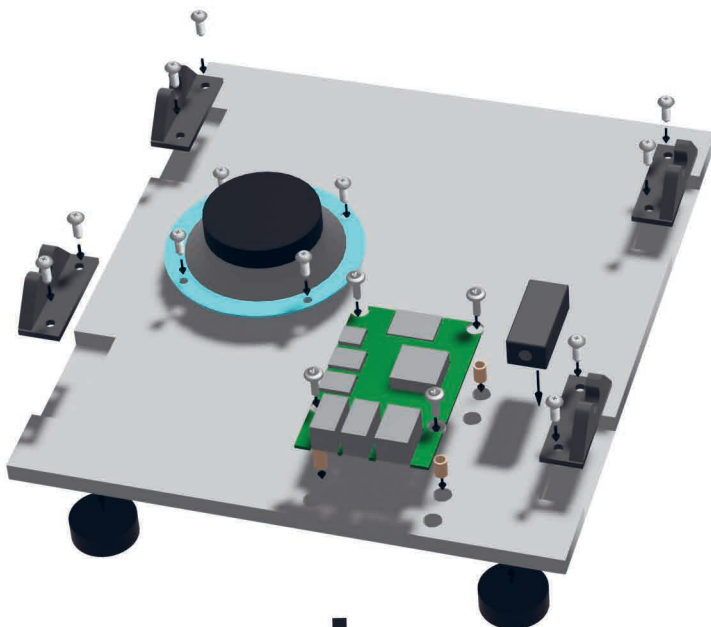


Vertical screen version



7

 **X4**



X4

+  **X8**
3.5x10mm



X1



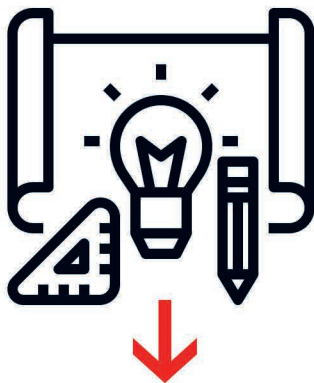
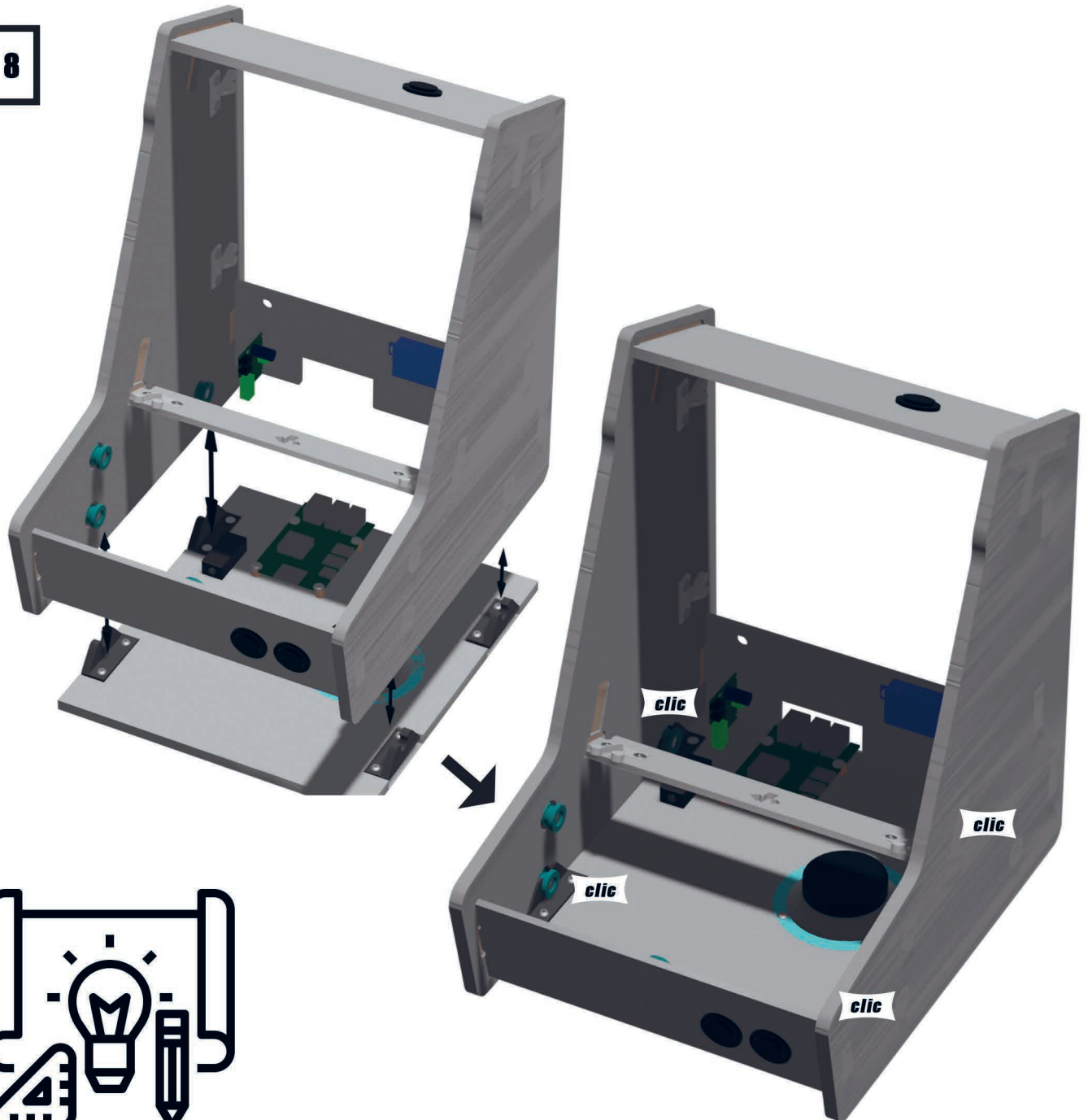
+  **X4**
3.5x10mm



+   **X4**
2.6x12mm

*Connect the audio filter jack plug
to the audio input of the Raspberry*

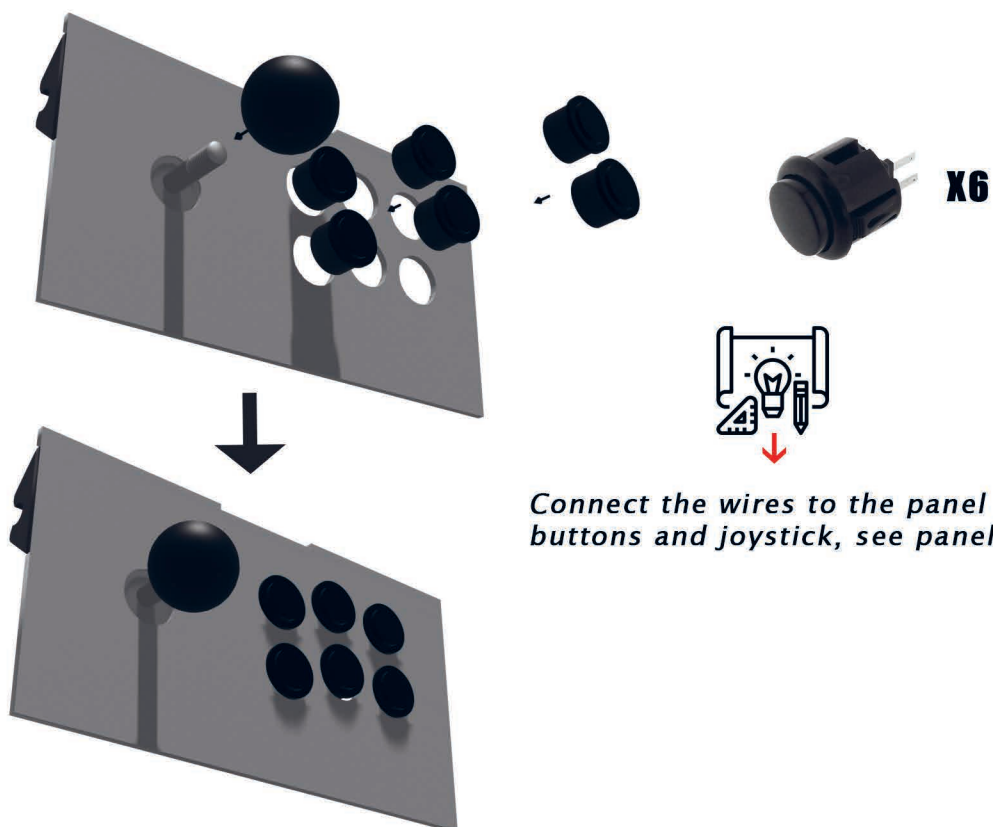
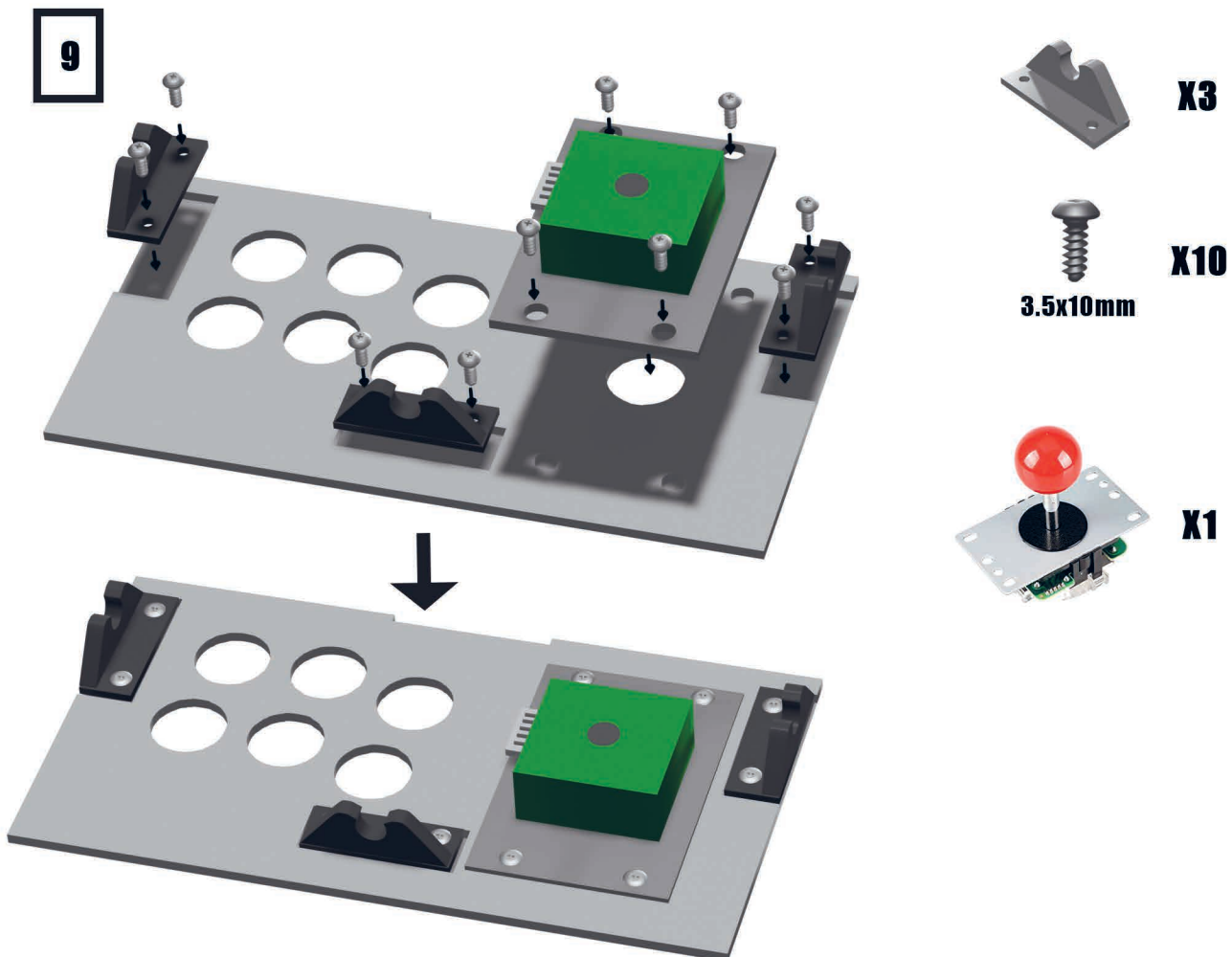
8



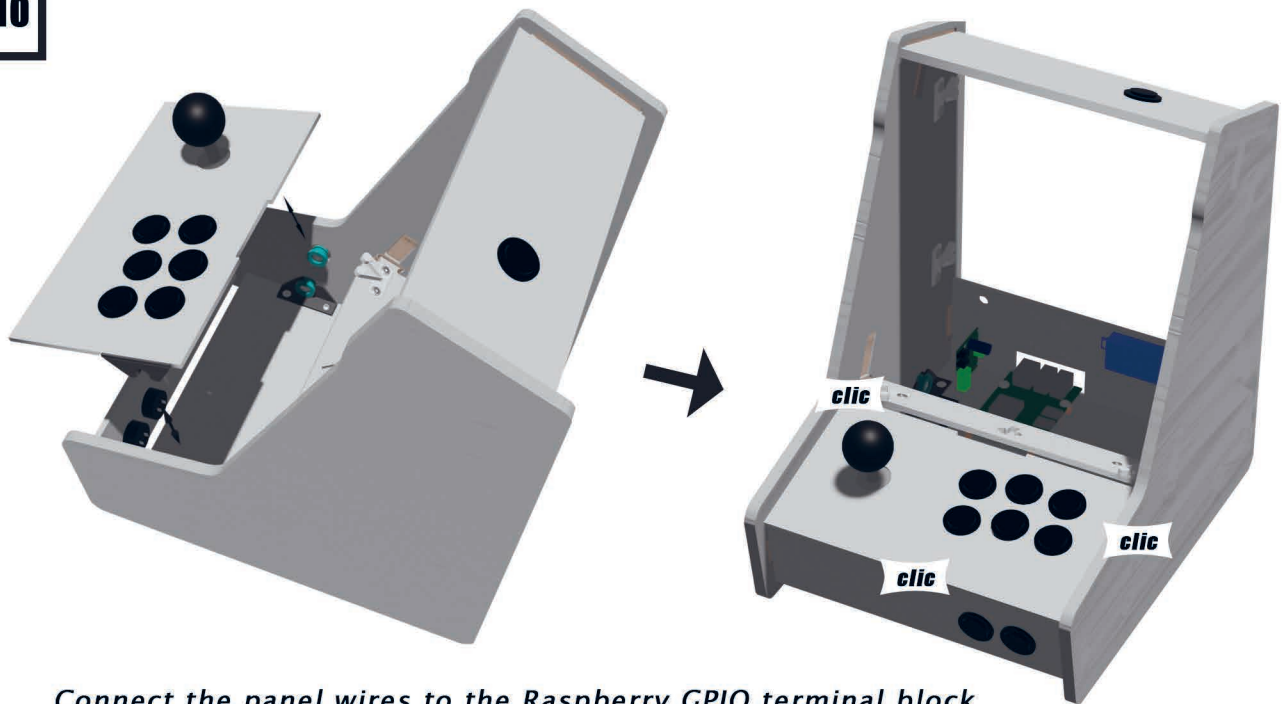
Connect (see electrical wiring diagram):

- Connect the terminals of the audio amplifier to the loudspeaker
 - Connect the jack plug of the audio filter to the audio amplifier
 - Connect the USB plug to the Raspberry
 - On the WAGO terminal blocks, connect the +12V (red wires) on a terminal block, then connect the ground wires (black wires) on the other Wago terminal block.
 - >Audio amplifier
 - >12V to +5V USB converter
 - >Main switch (red wire)
 - >Female power plug (black wire)
 - >The 12V power plug that will be used for the LCD screen
 - >The voltage regulator for the LED buttons (optional)
- Caution Only 1 wire per location on the Wago terminal block.
- Prepare the HDMI cable for the LCD screen

9



10



Connect the panel wires to the Raspberry GPIO terminal block
(See the GPIO wiring diagram)
Connect the LED power wires to the 12V dimmer (optional)

11

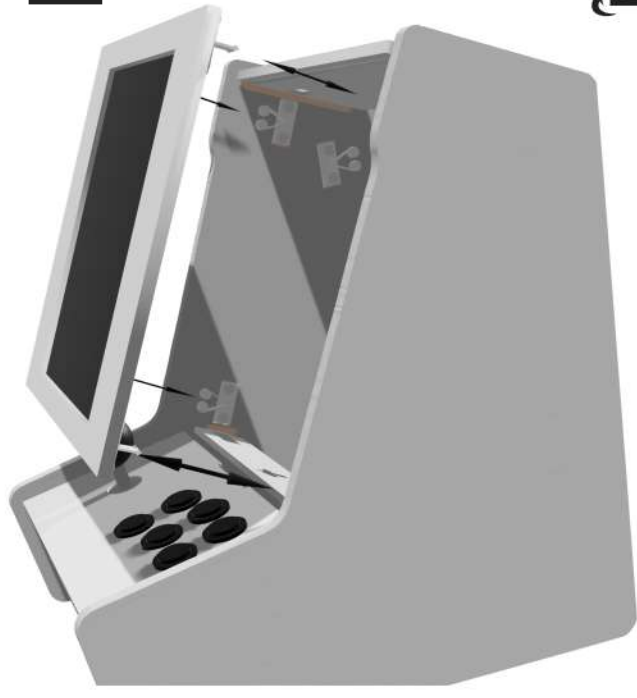


Connect the 12V power plug and the HDMI cable to the LCD screen

11 Vertical screen version



Go to the next step if you chose the configuration with the screen horizontal



Connect the +5V USB-C plug and the HDMI cable to the LCD screen

12

Installation of the plexiglass in front of the screen



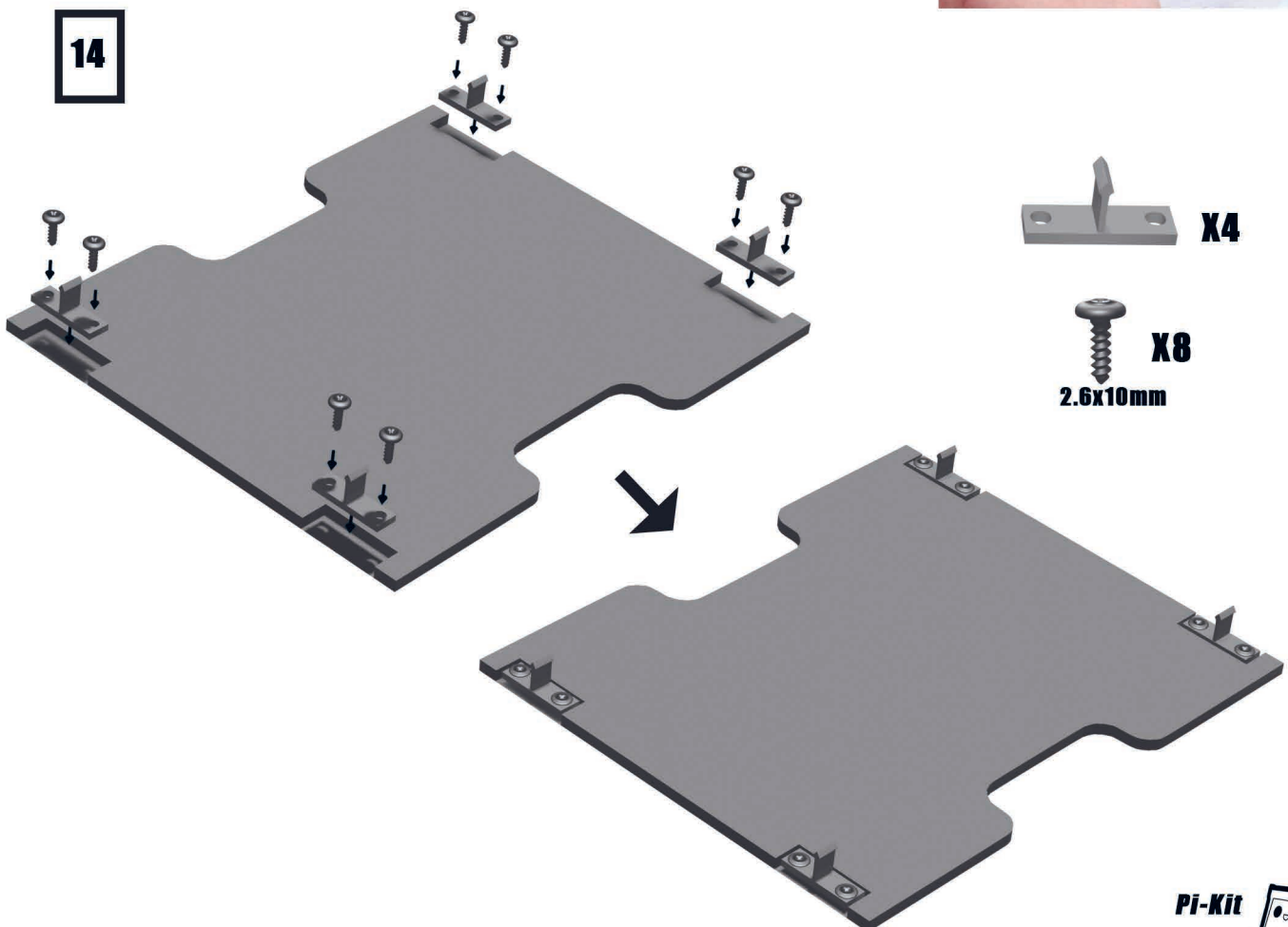
13



Lay the 2 pieces of 23 cm of adhesive profile.
Then go around with the adhesive profile. A drop of glue
(optional) can be added to reinforce at corners.
Cut at the corners to flatten the rubber ply.



14



15

